

# MINI25 - Compact Enclosed Disconnect Switch 25A

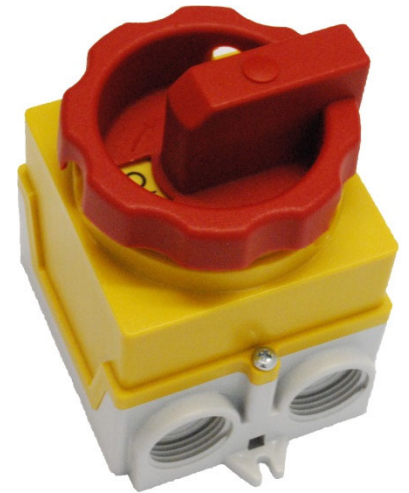
The most cost-effective model of enclosed 25A disconnect switch from SONTHEIMER.

Specially designed to control small/medium automation products, single-phase and three-phase electric motors, heating and lighting control panels, etc.

The new LBS-WAI184/R3/25A switch has a very small footprint, is easy to install, wire and maintain, and conforms to current requirement and standards for use as a motor disconnect.

## Features and Specifications:

- 2 screw ground/neutral terminals inside the enclosure
- Mounting via 2 external screw slots or 4 internal knock-outs
- **Maximum wire section:** 4mm<sup>2</sup>; 10AWG
- **Cable entry:** 4 pre-threaded M20x1.5
- **Dimensions:** 57.5x64x74mm; 3¼ x 2½ x 3"; (HxWxD)
- **Operating temperature:** -20 to 50°C (max 80°C)
- **Ingress protection:** IP67
- **Voltage rating (CSA/UL):** 600Vac
- **Current rating (CSA/UL):** 25A
- **3-ph HP rating (CSA/UL):** 240V-1HP / 480V-5HP / 600V-5HP
- **Approvals:** CSA, UL, CE-marked, RoHS



## Compact enclosed disconnect switches 25A and accessories (Order by Part No.)

Part No.	Description
LBS-WAI184/R3/25A	25A compact enclosed 3-ph disconnect switch, red/yellow lockable handle Z33
LBS-WAI185/R3/25A	25A compact enclosed 3-ph disconnect switch, black/grey lockable handle Z33
180.020	M20x1.5 cable gland, polyamide 6 light grey, range 6-12mm, 0.236-0.472 inches
181.020	M20x1.5 cable gland - reduced seal, polyamide 6 light grey, range 5-9mm, 0.197-0.354 inches
182.020	M20x1.5 cable gland, polyamide 6 light grey, range 10-14mm, 0.394-0.551 inches
193.622	Thread adapter, polyamide, M20(M) to 1/2in NPT(F)

*Information subject to change without notice*

## Dimensional Drawings (mm):

