



Double Insulated Position Switches IN62, IN65 and I81

Double Insulated Position Switch IN62

- Position Switch in accordance with EN 50047
- Only available with plunger actuator



Advantages

- High reliability at low currents (1 mA)
- Protection class IP67
- Hinged snap-on cover
- Self cleaning contacts


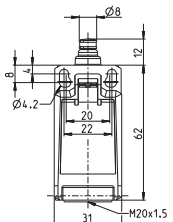
Technical Data

- Mechanical service life:
up to 30 million switching cycles
- Contact safety: 1 mA for 24 VDC



Order data IN62 as complete system

The switches have standard fixings and an M20 cable entry.

IN62-... SK	Designation	Article number	System	Switching function
	IN62-SU1Z SK	6083000200	Snap action	1 NC / 1 NO
	IN62-U1Z SK	6083000201	Slow action	1 NC / 1 NO
	IN62-SA2Z SK	6083000202	Snap action	2 NC
	IN62-A2Z SK	6083000203	Slow action	2 NC
	IN62-SE2 SK	6083000204	Snap action	2 NO
	IN62-E2 SK	6083000205	Slow action	2 NO
	IN62-UV1Z SK	6083000206	Slow action	1 NC / 1 NO overlapping

Double Insulated Position Switch IN65

- Position Switch in accordance with EN 50047
- Modular design
- Easy modular adjustment of actuator head through 45° increments

Advantages

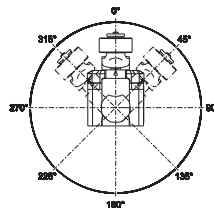
- High reliability at low currents (1 mA)
- Tool-free rotation and changing of actuator
- Actuator made of metal
- Protection class IP66 and IP67
- Hinged snap-on cover
- Self cleaning contacts

Technical Data

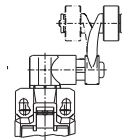
- Mechanical service life: up to 30 million switching cycles
- Contact safety: 1 mA for 24 V DC



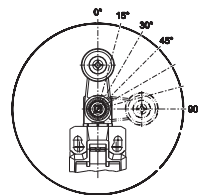
Adjustable actuator elements



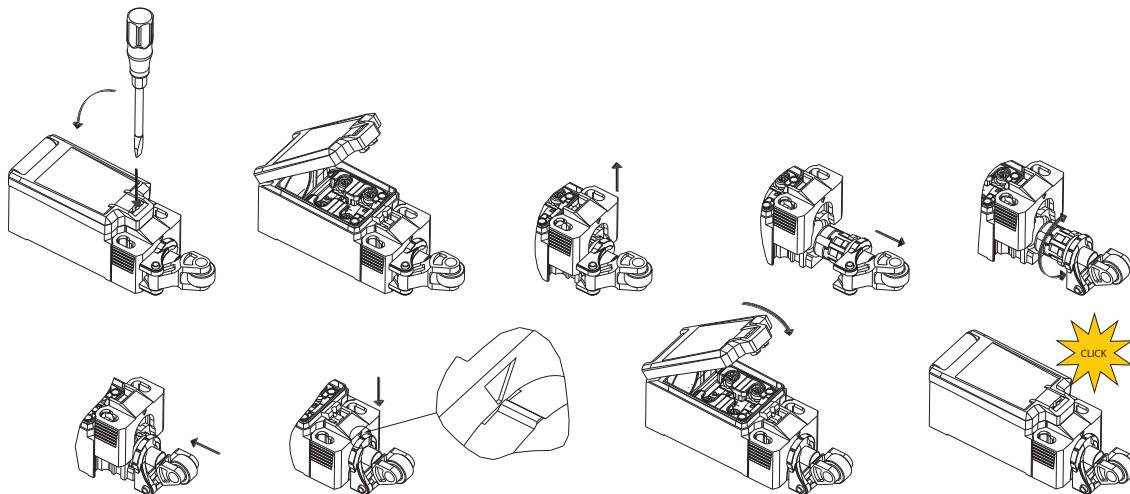
Rotatable lever



Adjustable lever



Rotate actuator



Double Insulated Position Switch I81

- Integrated latch function: After actuation manually reset by pulling the blue button necessary
- Modular design
- Easy modular adjustment of actuator head through 45° increments



Advantages

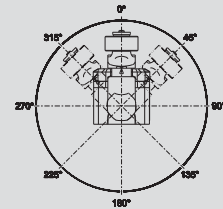
- High reliability at low currents (1 mA)
- Tool-free rotation and changing of actuator
- Actuator made of metal
- Protection class IP66 and IP67
- Hinged snap-on cover
- Self cleaning contacts

Technical Data

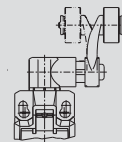
- Mechanical service life: 100.000 switching cycles
- Contact safety: 1 mA for 24 V DC



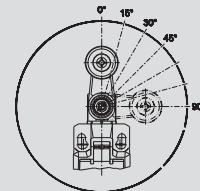
Adjustable actuator elements



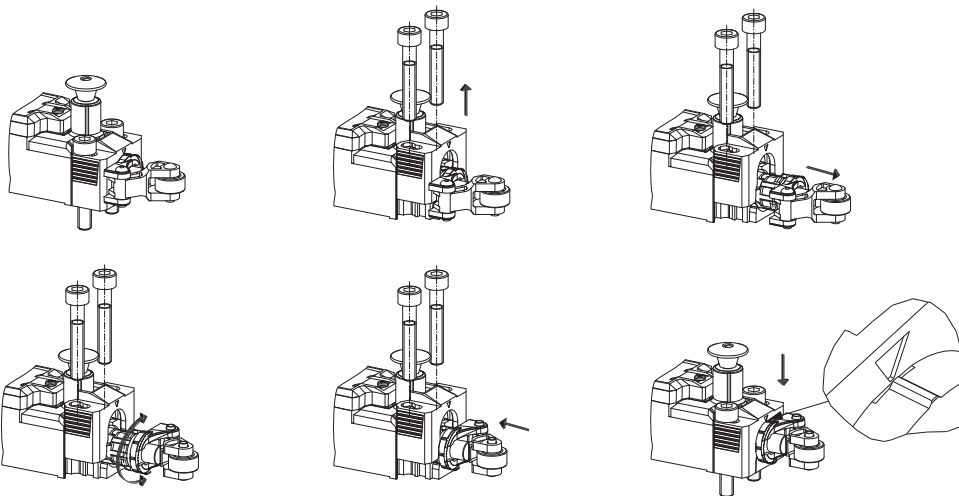
Rotatable lever



Adjustable lever

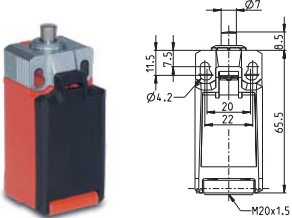


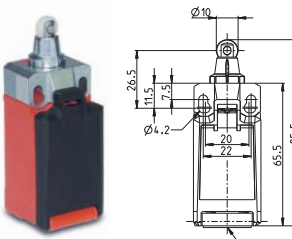
Rotate actuator

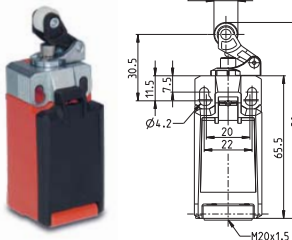


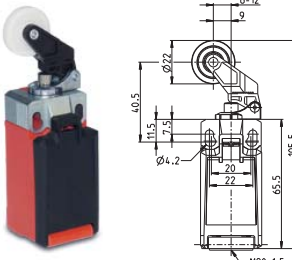
Order data IN65 as complete assembly

The switches have standard fixings and an M20 cable entry.

IN65-... SM	Designation	Article number	System	Switching function
	IN65-SU1Z SM	6083000207	Snap action	1 NC / 1 NO
	IN65-U1Z SM	6083000208	Slow action	1 NC / 1 NO
	IN65-SA2Z SM	6083000209	Snap action	2 NC
	IN65-A2Z SM	6083000210	Slow action	2 NC
	IN65-SE2 SM	6083000211	Snap action	2 NO
	IN65-E2 SM	6083000212	Slow action	2 NO
	IN65-UV1Z SM	6083000213	Slow action	1 NC / 1 NO overlapping

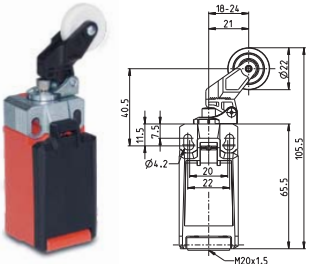
IN65-... RK	Designation	Article number	System	Switching function
	IN65-SU1Z RK	6083000214	Snap action	1 NC / 1 NO
	IN65-U1Z RK	6083000215	Slow action	1 NC / 1 NO
	IN65-SA2Z RK	6083000216	Snap action	2 NC
	IN65-A2Z RK	6083000217	Slow action	2 NC
	IN65-SE2 RK	6083000218	Snap action	2 NO
	IN65-E2 RK	6083000219	Slow action	2 NO
	IN65-UV1Z RK	6083000220	Slow action	1 NC / 1 NO overlapping

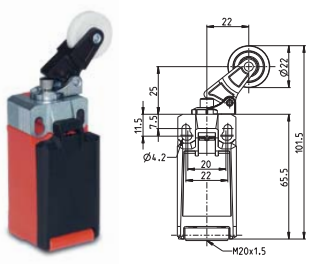
IN65-... HK	Designation	Article number	System	Switching function
	IN65-SU1Z HK	6083000221	Snap action	1 NC / 1 NO
	IN65-U1Z HK	6083000222	Slow action	1 NC / 1 NO
	IN65-SA2Z HK	6083000223	Snap action	2 NC
	IN65-A2Z HK	6083000224	Slow action	2 NC
	IN65-SE2 HK	6083000225	Snap action	2 NO
	IN65-E2 HK	6083000226	Slow action	2 NO
	IN65-UV1Z HK	6083000227	Slow action	1 NC / 1 NO overlapping

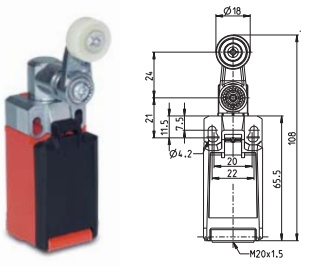
IN65-... DGHK	Designation	Article number	System	Switching function
	IN65-SU1Z DGHK	6083000228	Snap action	1 NC / 1 NO
	IN65-U1Z DGHK	6083000229	Slow action	1 NC / 1 NO
	IN65-SA2Z DGHK	6083000230	Snap action	2 NC
	IN65-A2Z DGHK	6083000231	Slow action	2 NC
	IN65-SE2 DGHK	6083000232	Snap action	2 NO
	IN65-E2 DGHK	6083000233	Slow action	2 NO
	IN65-UV1Z DGHK	6083000234	Slow action	1 NC / 1 NO overlapping

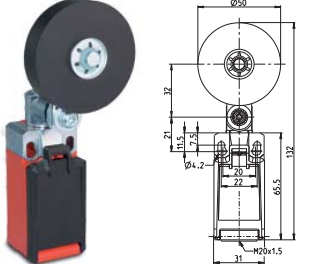
Order data IN65/I81 as complete assembly

The switches have standard fixings and an M20 cable entry.

IN65-... DGKK	Designation	Article number	System	Switching function
	IN65-SU1Z DGKK	6083000254	Snap action	1 NC / 1 NO
	IN65-U1Z DGKK	6083000255	Slow action	1 NC / 1 NO
	IN65-SA2Z DGKK	6083000256	Snap action	2 NC
	IN65-A2Z DGKK	6083000257	Slow action	2 NC
	IN65-SE2 DGKK	6083000258	Snap action	2 NO
	IN65-E2 DGKK	6083000259	Slow action	2 NO
	IN65-UV1Z DGKK	6083000260	Slow action	1 NC / 1 NO overlapping

IN65-... KNK	Designation	Article number	System	Switching function
	IN65-SU1Z KNK	6083000261	Snap action	1 NC / 1 NO
	IN65-U1Z KNK	6083000262	Slow action	1 NC / 1 NO
	IN65-SA2Z KNK	6083000263	Snap action	2 NC
	IN65-A2Z KNK	6083000264	Slow action	2 NC
	IN65-SE2 KNK	6083000265	Snap action	2 NO
	IN65-E2 KNK	6083000266	Slow action	2 NO
	IN65-UV1Z KNK	6083000267	Slow action	1 NC / 1 NO overlapping

IN65-... AHK	Designation	Article number	System	Switching function
	IN65-SU1Z AHK	6083000235	Snap action	1 NC / 1 NO
	IN65-U1Z AHK	6083000236	Slow action	1 NC / 1 NO
	IN65-SA2Z AHK	6083000237	Snap action	2 NC
	IN65-A2Z AHK	6083000238	Slow action	2 NC
	IN65-SE2 AHK	6083000239	Snap action	2 NO
	IN65-E2 AHK	6083000240	Slow action	2 NO
	IN65-UV1Z AHK	6083000241	Slow action	1 NC / 1 NO overlapping

IN65-... AHSGU RO50	Designation	Article number	System	Switching function
	IN65-SU1Z AHSGU RO50	6083000300	Snap action	1 NC / 1 NO
	IN65-U1Z AHSGU RO50	6083000296	Slow action	1 NC / 1 NO
	IN65-SA2Z AHSGU RO50	6083000301	Snap action	2 NC
	IN65-A2Z AHSGU RO50	6083000297	Slow action	2 NC
	IN65-SE2 AHSGU RO50	6083000302	Snap action	2 NO
	IN65-E2 AHSGU RO50	6083000298	Slow action	2 NO
	IN65-UV1Z AHSGU RO50	6083000299	Slow action	1 NC / 1 NO overlapping

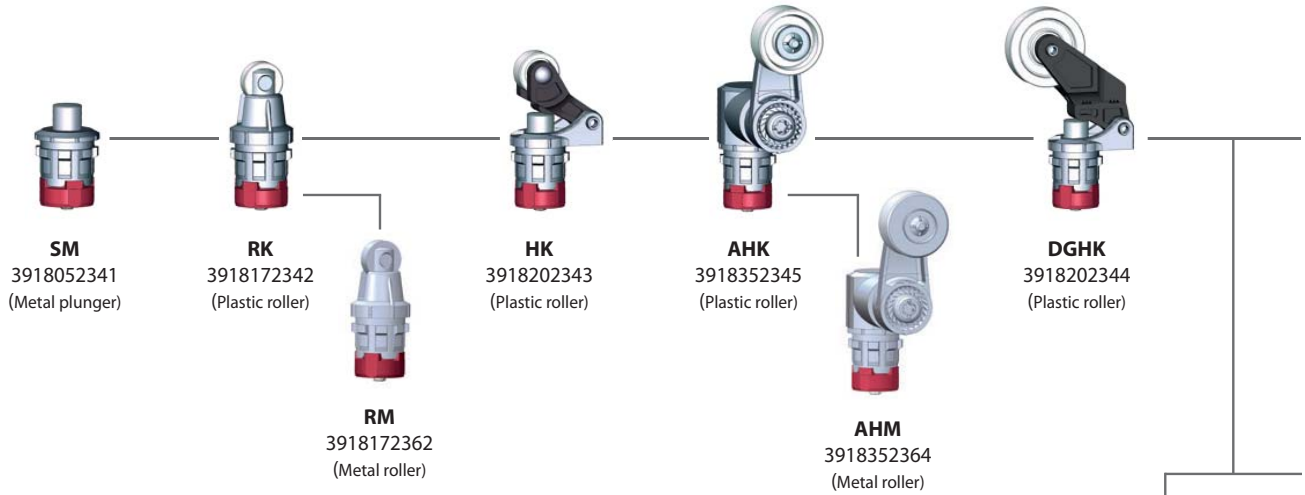
IN65-... AHDM	Designation	Article number	System	Switching function
	IN65-SU1 AHDM	6083000307	Snap action	1 NC / 1 NO
	IN65-U1 AHDM	6083000303	Slow action	1 NC / 1 NO
	IN65-SA2 AHDM	6083000308	Snap action	2 NC
	IN65-A2 AHDM	6083000304	Slow action	2 NC
	IN65-SE2 AHDM	6083000309	Snap action	2 NO
	IN65-E2 AHDM	6083000305	Slow action	2 NO
	IN65-UV1 AHDM	6083000306	Slow action	1 NC / 1 NO overlapping

IN65-... AVK	Designation	Article number	System	Switching function
	IN65-SU1 AVK	6083000280	Snap action	1 NC / 1 NO
	IN65-U1 AVK	6083000284	Slow action	1 NC / 1 NO
	IN65-SA2 AVK	6083000286	Snap action	2 NC
	IN65-A2 AVK	6083000279	Slow action	2 NC
	IN65-SE2 AVK	6083000288	Snap action	2 NO
	IN65-E2 AVK	6083000287	Slow action	2 NO
	IN65-UV1 AVK	6083000285	Slow action	1 NC / 1 NO overlapping

I81-...	Designation	Article number	System	Switching function
	I81-U1Z SM	6083000242	Slow action	1 NC / 1 NO
	I81-U1Z RK	6083000243	Slow action	1 NC / 1 NO
	I81-U1Z HK	6083000244	Slow action	1 NC / 1 NO
	I81-U1Z DGHK	6083000245	Slow action	1 NC / 1 NO
	I81-U1Z DGKK	6083000268	Slow action	1 NC / 1 NO
	I81-U1Z KNK	6083000269	Slow action	1 NC / 1 NO
	I81-U1Z AHK	6083000246	Slow action	1 NC / 1 NO

Order data IN65/I81 as component parts

Actuators

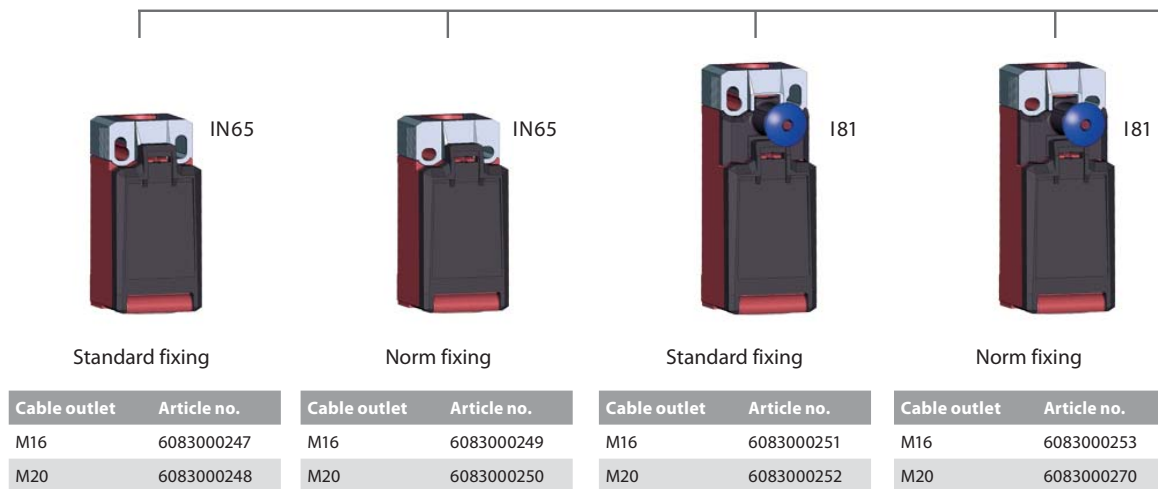


Designation	Article number	System	Switching function
C14-EB-U1Z	6005101156	Slow action	Changeover switch
C14-EB-SU1Z	6005151157	Snap action	Changeover switch
C14-EB-UV1Z	6005301158	Slow action	Changeover switch with overlapping
C14-EB-A2Z	6005801159	Slow action	2 NC
C14-EB-SA2Z	6005851160	Snap action	2 NC



Switching unit

Housing without switching unit



Housings also available in black.



Housing with switching unit



Housing with switching unit and M12 plug connector



Designation	Article number	System	Switching function
IN65-SU1Z M20	6083000271	Snap action	1 NC / 1 NO
IN65-U1Z M20	6083000272	Slow action	1 NC / 1 NO
IN65-SA2Z M20	6083000273	Snap action	2 NC
IN65-A2Z M20	6083000274	Slow action	2 NC
IN65-SE2 M20	6083000275	Snap action	2 NO
IN65-E2 M20	6083000276	Slow action	2 NO
IN65-UV1Z M20	6083000277	Slow action	1 NC / 1 NO overlapping

Designation	Article number	System	Switching function
IN65-SU1Z M12	6083000293	Snap action	1 NC / 1 NO
IN65-U1Z M12	6083000289	Slow action	1 NC / 1 NO
IN65-SA2Z M12	6083000294	Snap action	2 NC
IN65-A2Z M12	6083000290	Slow action	2 NC
IN65-SE2 M12	6083000295	Snap action	2 NO
IN65-E2 M12	6083000291	Slow action	2 NO
IN65-UV1Z M12	6083000292	Slow action	1 NC / 1 NO overlapping

Application examples

- Monitoring of safety gates, hatches or protective hoods
- Position monitoring of moving parts
- Object detection in conveying technology
- End position control of components
- Position monitoring on rolling doors
- Monitoring of sliding doors

