

**Operating instructions
Pneumatic Crimper AC 25T**



Date of issue: 053/2016

Keep for future use!

Basic information

The basic prerequisite for ensuring safe use and continuous operation of the AC 25T is knowledge of and compliance with the safety instructions.

It is a question of your own safety!

All persons working with the AC 25T must observe the notes on safety.

In addition, rules and regulations that apply to the place of use, particularly regarding accident prevention, must be observed.

Symbols

The following symbols will be used in these operating instructions:



indicates a possible **accident or injury hazard** and/or possible **damage** to the AC 25T.



indicates **notes on application**.

Dangerousness of the machine

The AC 25T has been constructed according to recognised technical safety regulations and has undergone a safety examination and received official acceptance.

It is equipped with safety devices.

However, operating error and misuse could present a danger to

- life and limb of the operator,
- the machine.

The AC 25T should only be used

- for the designated application and
- in perfect condition with regard to technical safety.

All persons involved with commissioning, operating and maintaining the AC 25T, must

- be appropriately qualified and
- follow these operating instructions precisely.

Designated use

The AC 25T is to be used exclusively for crimping wire-end ferrules with cross sections between 0.25 and 2.5 mm². Under no circumstances should large metal parts or similar objects be introduced; the die set will be ruined.

Unauthorised amendments to the AC 25T are prohibited for safety reasons!

! **Observation of all instructions and compliance with the prescribed operating conditions are part of the designated use.**

Sources of danger

The AC 25T must only be operated when the finger guard is screwed on.

Only filtered compressed air with a maximum pressure of 6 bar can be used.

Disconnect the machine from the compressed air before working on the AC 25T, during breaks and when the device is not in use. Do **not** pull on the compressed air tubing to disconnect.

Work places

The following should be avoided for operation and storage:

- damp or dusty places,
- places which are subject to high levels of heat, direct sunlight or low temperatures (operating range: 15 °C to 35 °C).

Protect the compressed air tubing from heat, oil and sharp edges.

Safety devices

The AC 25T has a finger guard at the front as a contact safety device.

Under no circumstances should this be removed.

The AC 25T is stopped when disconnected from the compressed air supply.

Permitted operators

Only authorised and instructed operators can work on the AC 25T.

The operator is responsible to third parties in the working area.

The owner must

- make the operating instructions available to the operator and
- make sure that the operator has read and understood them.

Guarantee

In principle, our "General terms of purchase and delivery" apply. These are available to the owner when the contract is concluded at the latest.

Guarantee and liability claims resulting from damage to personnel or property are inadmissible if the following points have been violated:

- Non-designated use of the AC 25T.
- Inappropriate working places.
- Inappropriate use and use which goes beyond that described in the operating instructions.
- Unauthorised structural amendments to the AC 25T.
- Continued use of the AC 25T when a malfunction has been established.
- Repairs carried out inappropriately.

! Only use original spare parts.

Application

The AC 25T is a pneumatic crimping tool for wire-end ferrules with a cross-section of between 0.25 and 2.5 mm².

The AC 25T comprises a tabletop unit and a foot-operated switch. As both hands are free to insert the wire fitted with wire-end ferrules, the AC 25T is ideally suited to pre-confectioning cables.

Components

- 1 Tabletop unit
- 2 Compressed-air tubing
- 3 Foot-operated switch
- 4 Switch
- 5 Storage compartment for wire-end ferrules
- 6 Head
7. Finger guard
8. Die set

Accessories

- 9 Table clamp

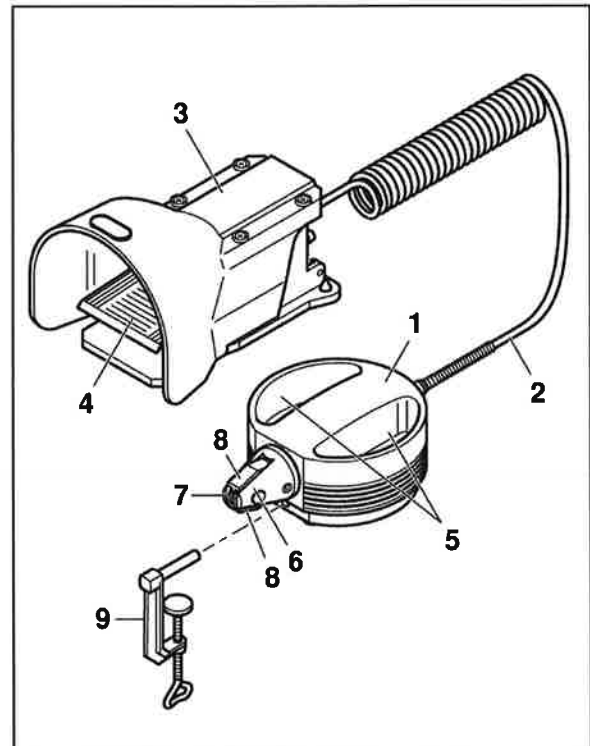


Fig. 1 Spare parts

Commissioning

- Check whether finger guard (1) is present and is sitting firm.
- Check whether the die set (2) is free from foreign matter.
- Check whether the pneumatic tubing nuts (3) have been tightened firmly.
- Insert the table clamp (4) into the bore hole in the tabletop unit and screw tightly to the worktable.
- Check the compressed-air supply:



min. 4 bar, max. 6 bar filtered air.

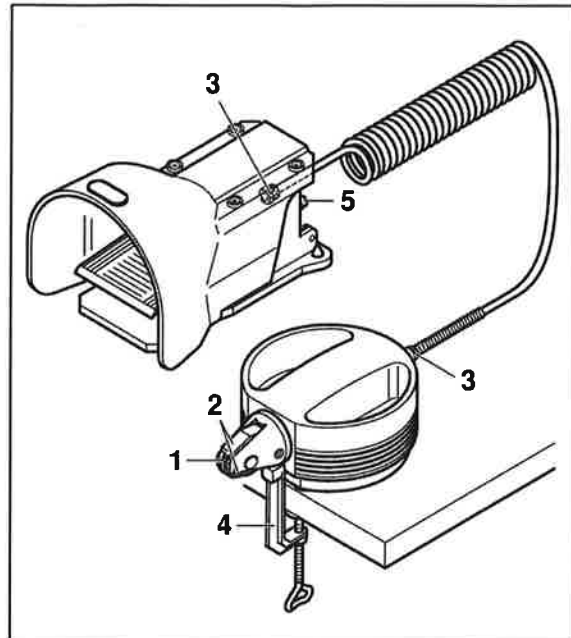


Fig. 2 Commissioning

- Connect the free connection (5) on the foot switch to the compressed-air supply.

Operation

- Introduce stripped wire with wire-end ferrules already fitted, at the side (1) or from the front (2).
- Press the switch (3), the crimping process will be triggered.
- Release the switch (4), the crimped wire can be removed again (5).

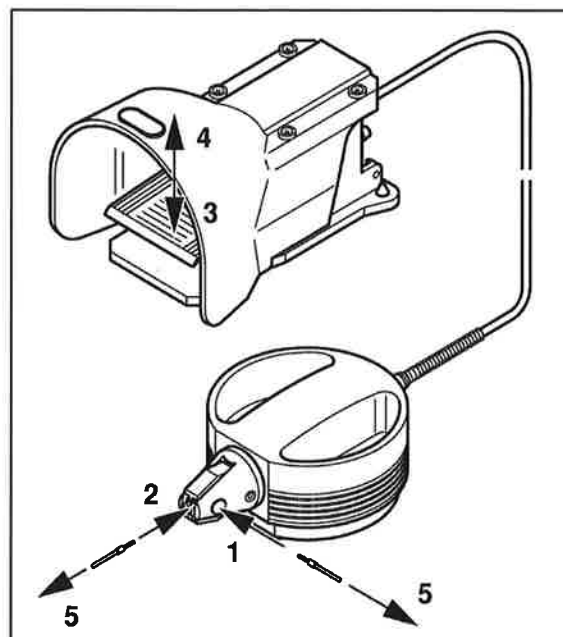


Fig. 3 Operation



**The AC 25T must be opened.
Disconnect compressed air!**

Cleaning

- Unscrew hexagon socket screw (1).
- Pull out the die set (2).
- Clean die set (3) and lightly oil pivot (4).
- Push in die set (5).
- Tighten hexagon socket screw (6).

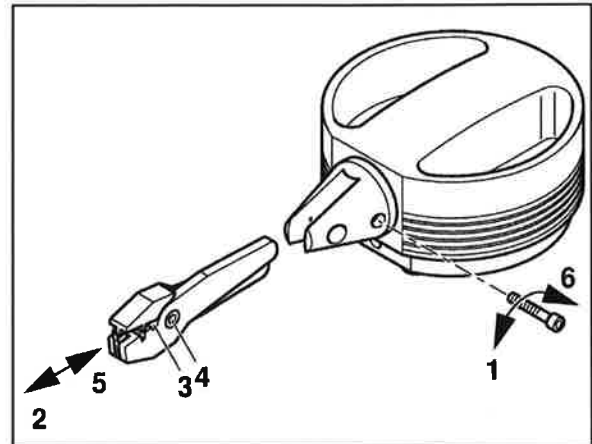


Fig. 4 Cleaning

Lubrication

- Unscrew the head (1).
- Remove the spring (2) and piston (3).
- Lubricate the two arms of the die set (4) (e. g. Gleitmo 746).
- Insert arms of the die set and spring.
- Insert head (5) and fasten fingertight.

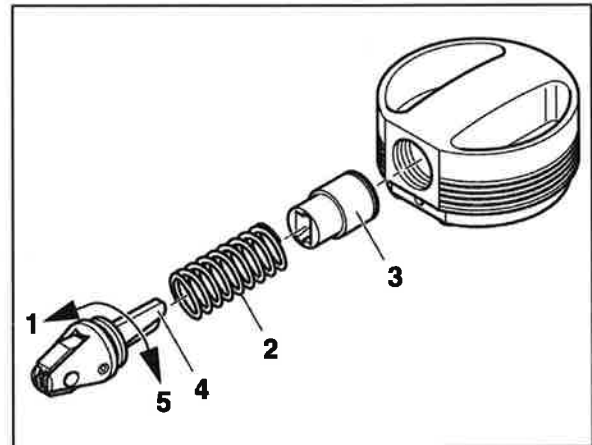


Fig. 5 Lubrication

The following spare parts can be ordered with the appropriate Article No.

Address

GLW GmbH
 Steinbeisstraße 2
 D-88353 Kisslegg
 Tel. 00 49 (0) 7563 9123-0
 Fax 00 49 (0) 7563 9123-99

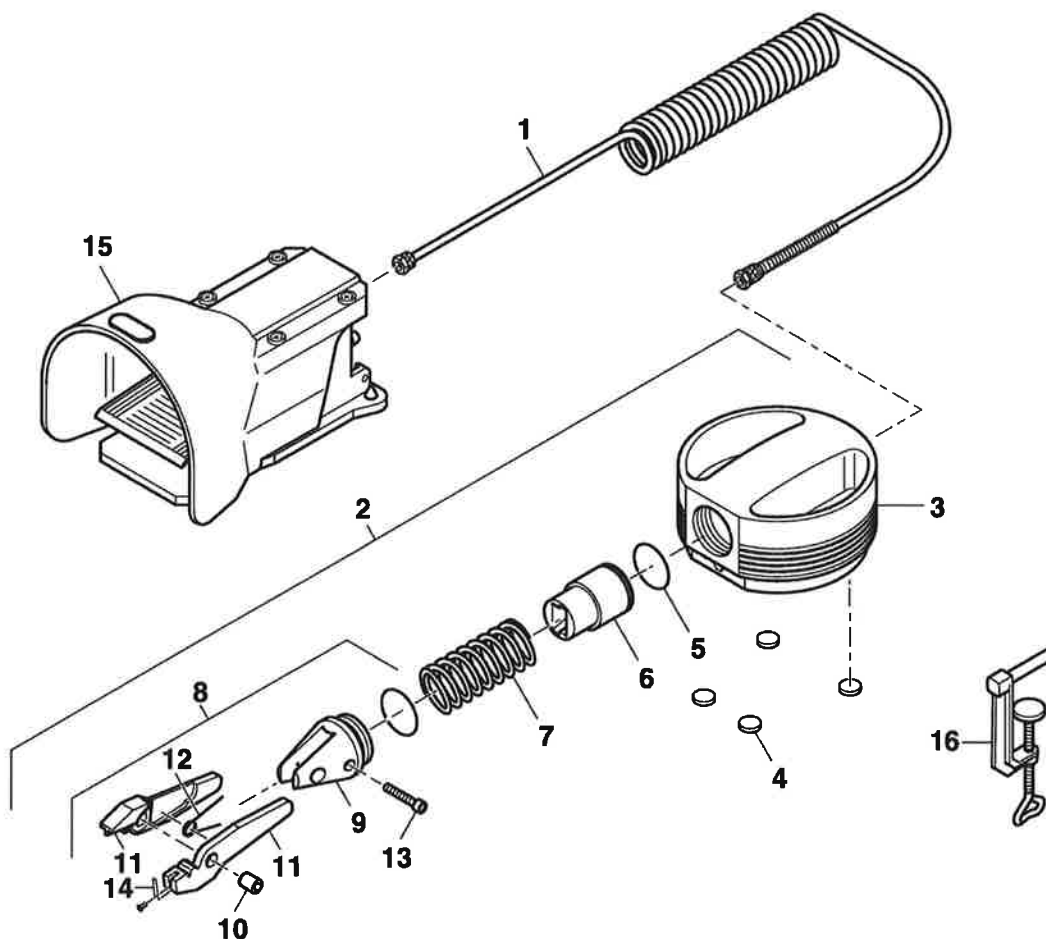


Fig.6 Spare parts

No.	Part	Article No.	No.	Part	Article No.
1	Compressed-air tubing	2534	9	Head section	2505
2	Tabletop unit, complete	2560	10	Pivot pin	2503
3	Body	2531	11	Die set	2501
4	Adhesive rubber pads	2537	12	Finger spring	2502
5	Sealing ring	2520	13	Hexagon socket screw	2504
6	Piston	2507	14	Finger guard	2500
7	Spring	2506	15	Foot-operated switch	2536
8	Head, complete	2540	16	Table clamp	2538

Instrument.....	Pneumatic Crimper
Crimping range	0.25 - 2.5 mm ²
Compressed-air connection	min. 4 bar
.....	max. 6 bar
Air consumption	0.2 l/Crimping at 5 bar
Dimensions (diameter x length x height)	200 x 135 x 75 mm
Weight	approx. 1 000 g
Acoustic pressure emissions L _{pA}	< 70 dB (A)

Name plate

Type
 Crimping range
 Compressed air connection
 Model year
 Series number



Manufacture

EU Symbol

Manufacturer: GLW GmbH
Address: Steinbeisstraße 2
88353 Kisslegg
Germany

We hereby declare that the machine described in the following complies with the appropriate fundamental health and safety requirements of the EC Directives regarding machinery with regard to its design and construction as well as the equipment that we have introduced onto the market. This declaration is rendered invalid in the case of amendments to the machine that have not been authorised by our company.

Designation of the equipment: **Pneumatic Crimper**

Machine type: **AC 25 T**



Appropriate EC Directive: **EG-Machine Directive 2006/42/EG**

Harmonisation standard used: **DIN EN ISO 12100-1 and correction 1:2013-08
DIN EN ISO 13857:2008-06
DIN EN 349:2008 correction 1:2009-01**

Place, Date Kisslegg, 16. March 2016

Legally binding signature:



Particulars regarding signatory: Bruno Weiland

Responsible person for Documents: Bruno Weiland

GLW GmbH
Steinbeisstraße 2
88353 Kisslegg
Germany
Tel. 00 49 (0) 7563 9123-0
Fax 00 49 (0) 7563 9123-99

The company GLW retains the copyright to these operating instructions.
It is not permitted to reprint, reproduce or translate, even excerpts, without our consent.

© 2010 GLW GmbH
