

**Operating instructions**  
**Pneumatic Crimper AC 25**

CE

Issue date: 05/97

**Keep for future use!**

## Basic information

The basic prerequisite for ensuring safe use and continuous operation of the AC 25 is knowledge of and compliance with the safety instructions.

**It is a question of your own safety!**

All persons working with the AC 25 must observe the notes on safety.

In addition, rules and regulations which apply to the place of use, particularly regarding accident prevention, must be observed.

## Symbols

The following symbols will be used in these operating instructions:



indicates a possible **accident or injury hazard** and/or possible **damage** to the AC 25.



indicates **notes on application**.

## Dangerousness of the machine

The AC 25 has been constructed according to recognised technical safety regulations and has undergone a safety examination and received official acceptance.

It is equipped with safety devices.

However, operating error and misuse could present a danger to

- life and limb of the operator,
- the machine.

The AC 25 should only be used

- for the designated application and
- in perfect condition with regard to technical safety.

All persons involved with commissioning, operating and maintaining the AC 25, must

- be appropriately qualified and
- follow these operating instructions precisely.

## Designated use

The AC 25 is to be used exclusively for crimping wire-end ferrules with cross sections between 0.25 and 2.5 mm<sup>2</sup>. Under no circumstances should large metal parts or similar objects be introduced; the die set will be ruined.

Unauthorised amendments to the AC 25 are prohibited for safety reasons!

**!** **Observation of all instructions and compliance with the prescribed operating conditions are part of the designated use.**

## Sources of danger

The AC 25 must only be operated when the finger guard is screwed on.

Only filtered compressed air with a maximum pressure of 6 bar can be used.

- Disconnect the machine from the compressed air before working on the AC 25, during breaks and when the device is not in use. Do **not** pull on the compressed air tubing to disconnect.

## Work places

The following should be avoided for operation and storage:

- damp or dusty places,
- places which are subject to high levels of heat, direct sunlight or low temperatures (operating range: 15 °C to 35 °C).

Protect the compressed air tubing from heat, oil and sharp edges.

## Safety devices

The AC 25 has a finger guard at the front as a contact safety device.

Under no circumstances should this be removed.

The AC 25 is stopped when disconnected from the compressed air supply.

## Permitted operators

Only authorised and instructed operators can work on the AC 25.

The operator is responsible to third parties in the working area.

The owner must

- make the operating instructions available to the operator and
- make sure that the operator has read and understood them.

## Guarantee

In principle, our "General terms of purchase and delivery" apply. These are available to the owner when the contract is concluded at the latest.

Guarantee and liability claims resulting from damage to personnel or property are inadmissible if the following points have been violated:

- Non-designated use of the AC 25.
- Inappropriate working places.
- Inappropriate use and use which goes beyond that described in the operating instructions.
- Unauthorised structural amendments to the AC 25.
- Continued use of the AC 25 when a malfunction has been established.
- Repairs carried out inappropriately.

**!** Only use original spare parts.

## Application

The AC 25 is a pneumatic crimping tool for wire-end ferrules with a cross-section of between 0.25 and 2.5 mm<sup>2</sup>.

On account of its handy design and the possibility of crimping at the side as well as the front of the device, it is ideally suited to wiring up electrical cabinets.

## Components

- 1 Compressed air tubing
- 2 Lever
- 3 Body
- 4 Head
- 5 Die set
- 6 Finger guard

## Accessories

- 7 Magnetic holder

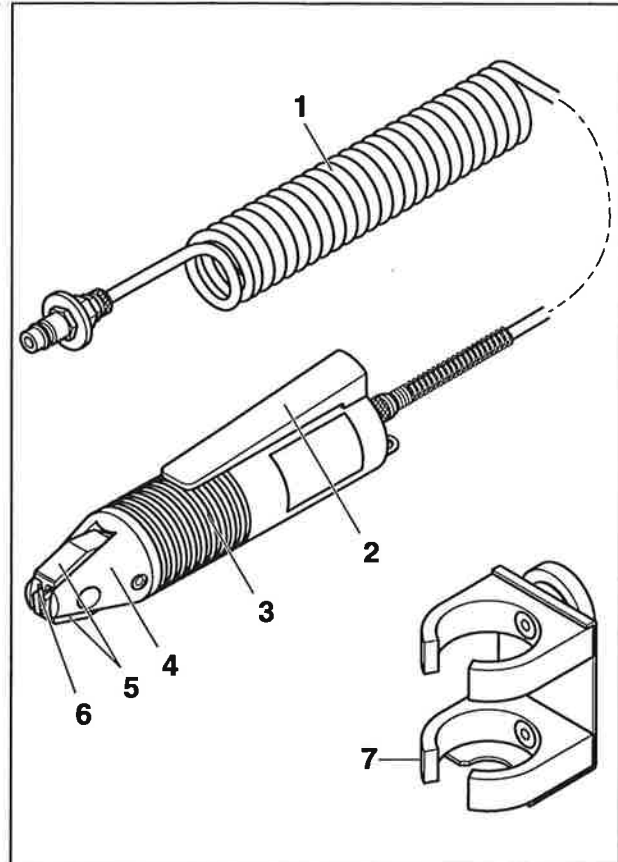


Fig. 1 Components

## Commissioning

- Check whether finger guard (1) is present and is sitting firm.
- Check whether the die set (2) is free from foreign matter.
- Check whether the pneumatic tubing nuts (3) have been tightened firmly.
- Check the compressed-air supply:



min. 4 bar, max. 6 bar filtered air.

- Connect the tubing plug-in connector (4) to the compressed-air supply.

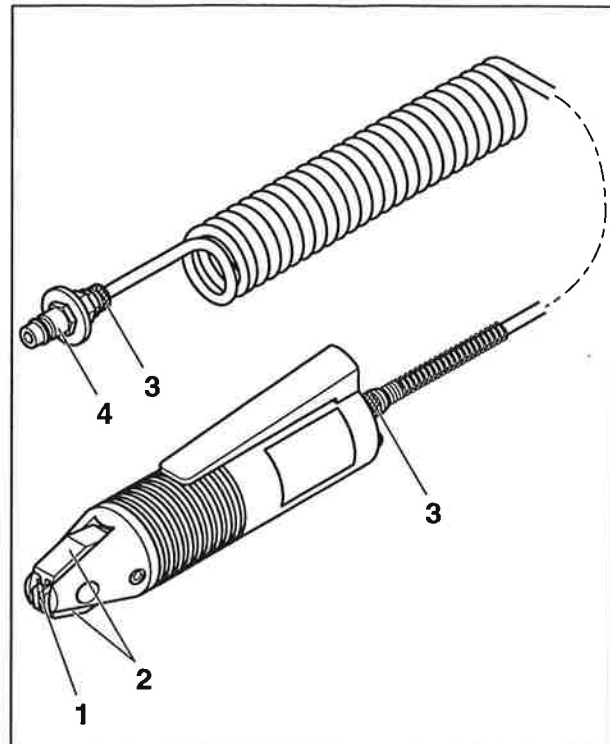


Fig. 2 Commissioning

## Operation

- Introduce stripped wire with wire-end ferrules already fitted, at the side (1) or from the front (2).
- Press the lever (3), the crimping process will be triggered.
- Release the lever (4), the crimped wire can be removed again (5).

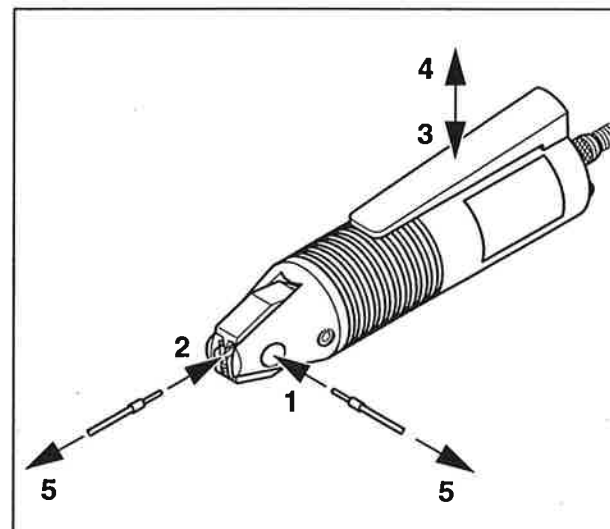


Fig. 3 Operation



The AC 25 must be opened.  
Disconnect compressed air!

## Cleaning

- Unscrew hexagon socket screw (1).
- Pull out the die set (2).
- Clean die set (3) and lightly oil pivot (4).
- Push in die set (5).
- Tighten hexagon socket screw (6).

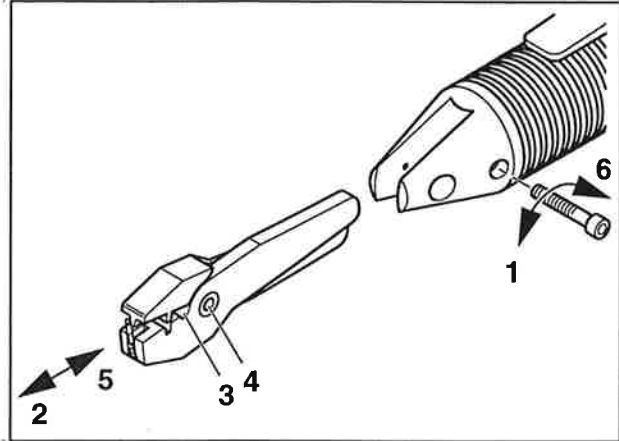


Fig. 4 Cleaning

## Lubrication

- Unscrew the head (1).
- Remove the spring (2) and piston (3).
- Lubricate the two arms of die set (4) (e. g. Gleitmo 746).
- Insert piston and spring.
- Insert head (5) and fasten fingertight.
- Pay attention that the arms of the die set (4) are correctly engaged in the piston (3).

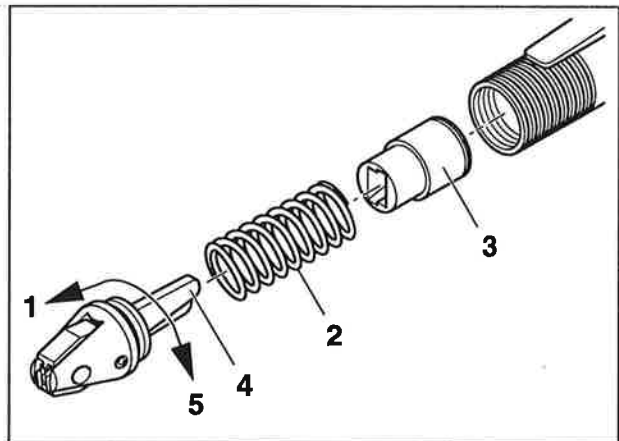
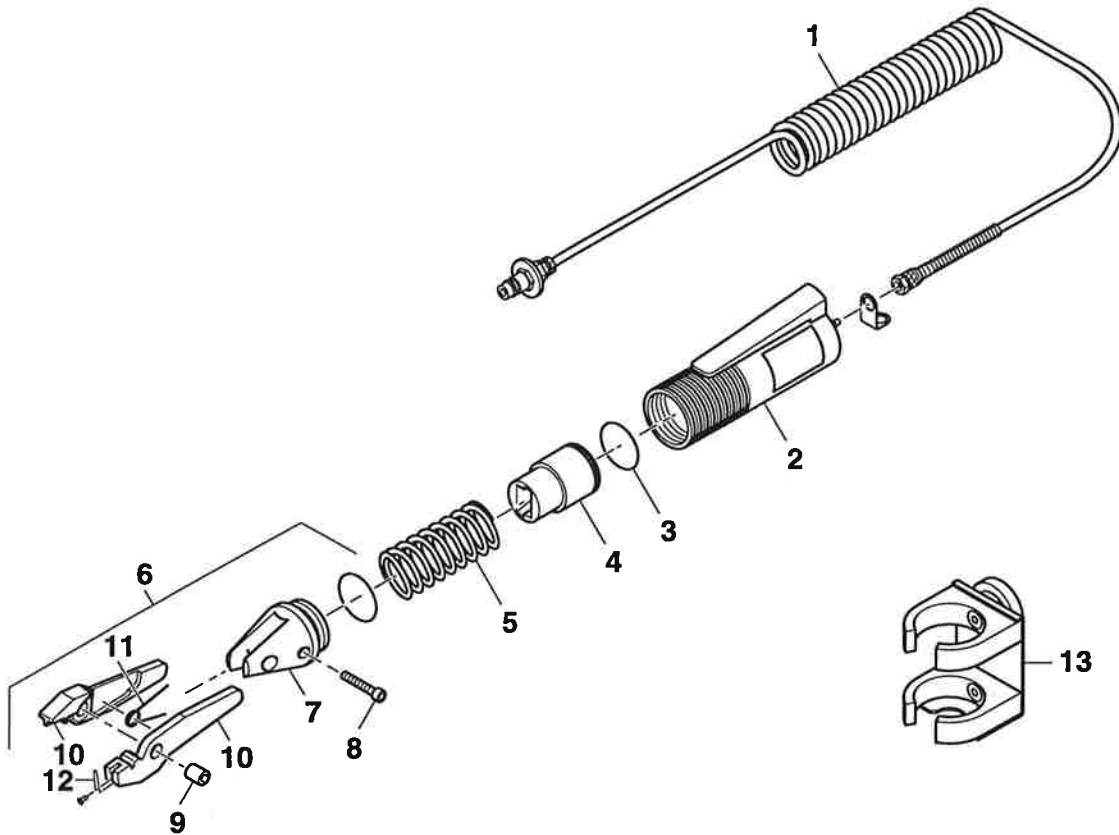


Fig. 5 Lubrication

The following spare parts can be ordered with the appropriate Article No.

**Address**

GLW Elektrotechnische Bauteile  
 Kunststoffverarbeitung GmbH  
 Steinbeisstraße 2  
 D-88353 Kisslegg  
 Tel. 00 49 (0) 7563 9123-0  
 Fax 00 49 (0) 7563 9123-99



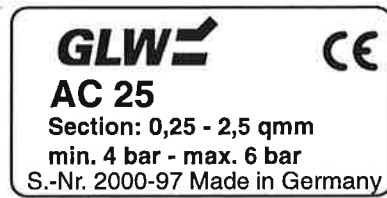
**Fig. 6 Spare parts**

No.	Part	Article No.	No.	Part	Article No.
1	Compressed air tubing	2516	8	Hexagon socket screw	2504
2	Body	2508	9	Pivot pin	2503
3	Sealing ring	2520	10	Die set	2501
4	Piston	2507	11	Finger spring	2502
5	Spring	2506	12	Finger guard	2500
6	Head, complete	2540	13	Magnetic holder	DX
7	Head section	2505			

Instrument..... Pneumatic Crimper  
Crimping range.....0.25 - 2.5 mm<sup>2</sup>  
Compressed-air connection..... min. 4 bar  
..... max. 6 bar  
Air consumption ..... 0.2 l/Crimping at 5 bar  
Dimensions (diameter x length)..... 44 x 190 mm  
Weight..... approx. 450 g

**Name plate**

Manufacturer  
Type of machine  
Crimping range  
Compressed air connection  
Series number/model year



EU Symbol

Country of manufacture

Manufacturer: GLW Elektrotechnische Bauteile  
Kunststoffverarbeitung GmbH

Address: Steinbeisstraße 2  
D-88353 Kisslegg

We hereby declare that the machine described in the following complies with the appropriate fundamental health and safety requirements of the EC Directives regarding machinery with regard to its design and construction as well as the equipment that we have introduced onto the market. This declaration is rendered invalid in the case of amendments to the machine that have not been authorised by our company.

Designation of the  
equipment: Pneumatic Crimper

Machine type: AC 25



Appropriate  
EC Directive: 89/392/EEC

Harmonisation  
standard  
used: EN292-1, EN292-2 "Safety of machinery"

Place, Date Kisslegg, 1999-02-18

Legally binding signature:

Particulars regarding signatory:



GLW Elektronische Bauteile  
Kunststoffverarbeitung GmbH  
Steinbeisstraße 2  
D-88353 Kisslegg  
Tel. 00 49 (0) 7563 9123-0  
Fax 00 49 (0) 7563 9123-99

The company GLW retains the copyright to these operating instructions.

It is not permitted to reprint, reproduce or translate, even excerpts, without our consent.

© 1997 GLW Elektrotechnische Bauteile  
Kunststoffverarbeitung GmbH

---