

500.920 Pneumatic Bench-Mount Crimping Tool with Foot Switch and Hose

AM-30

Instructions





AM-30 Operation Instruction

Product

Before operation, please read the instruction carefully for the operating method and technical parameters.

About product:

1. The machine is driven by dual-action normal cylinder, which has advantages of high efficiency and quality in crimping force and speed. The machine is fit for crimping many kinds of terminals. The die sets are interchangeable with our manual crimping tools. So we can provide you all kinds of die sets for crimping.
2. The two sides of the machine's front part can store 10 die sets, the die sets can be self-selection. (Remarks: The standard configuration of the machine includes 1 die set. The die set can be self-selection.)



-1-

AM-30 Operation Instruction

Maintenance and storage:

1. Lubricate all mechanical moving joint before operation to increase their service life.
2. Since the product is pneumatic device, do not operate or store it in environment with high or low temperature and high humidity.
3. Please keep it clean and dry before storage to avoid rusting. Mount dust caps at the gas inlet and outlet or adopt other measures.

Notice for replace the die sets:

1. Cut off gas supply.
2. Dismount the fix bolts on the clamp with the L spanner or cross screwdriver.
3. Replace a desired die set. Since the die sets are used in pairs, please align them well. Please press the foot operated gas valve slowly to make the machine worked at low speed in order to check the mounted die set.
4. Mount the fix bolts and screw down them again.



-2-

AM-30 Operation Instruction

■ Operating method:

1. Connect the gas hose according to relative marks on the equipment and accessories. (Connect the IN1 on the pneumatic machine to the OUT1 on the foot air valve. Connect IN2 on the pneumatic machine to the OUT2 on the foot air valve. Connect the IN on the foot air valve to the air compressor.)
2. Open gas supply, the binding clip should be opened for crimping. Place the terminal in a relative clamp, press the gas valve by the foot, and release it after finished.
3. Crimping speed can be controlled by the foot or optional pipe joint with a throttle valve.
4. When processing terminals with large size, please guarantee enough gas supply and air pressure.
5. Push the position marked with the arrow, and the door will open.

■ Operating condition and notice:

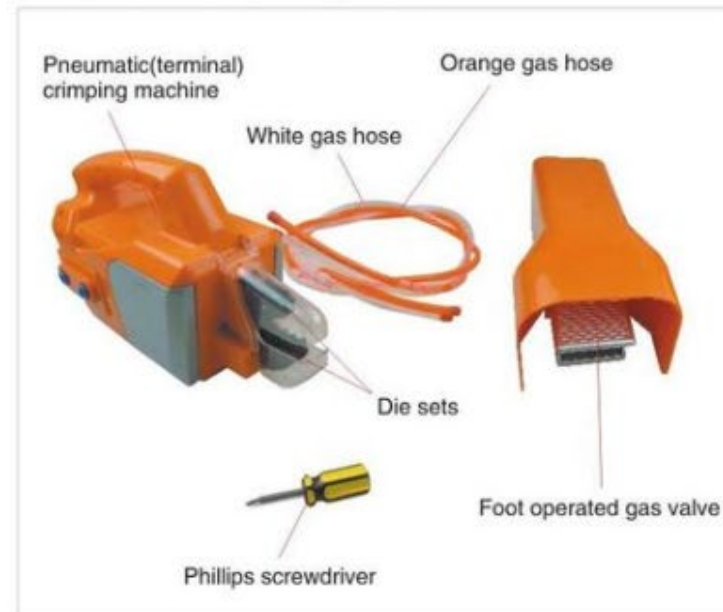
1. Flow in the equipment: compressed air.
2. Operating condition and flow temperature: 5-60°C
3. Medium in the cylinder should be filtrated by filter element above 40 um before injection(Viz. gas supply to the cylinder should pass the air filter before operation)
4. Clean all gas hoses and fittings for connecting the pipe line to protect the cylinder.
5. If used in low temperature, take some measures to avoid freezing in the system.
6. Advice: medium in the cylinder should be lubricated before operation (Viz. add an atomized lubricator in the gas supply line; turbine 1# oil ISOVG32 is recommended.)

AM-30 Operation Instruction

■ Technical parameters:

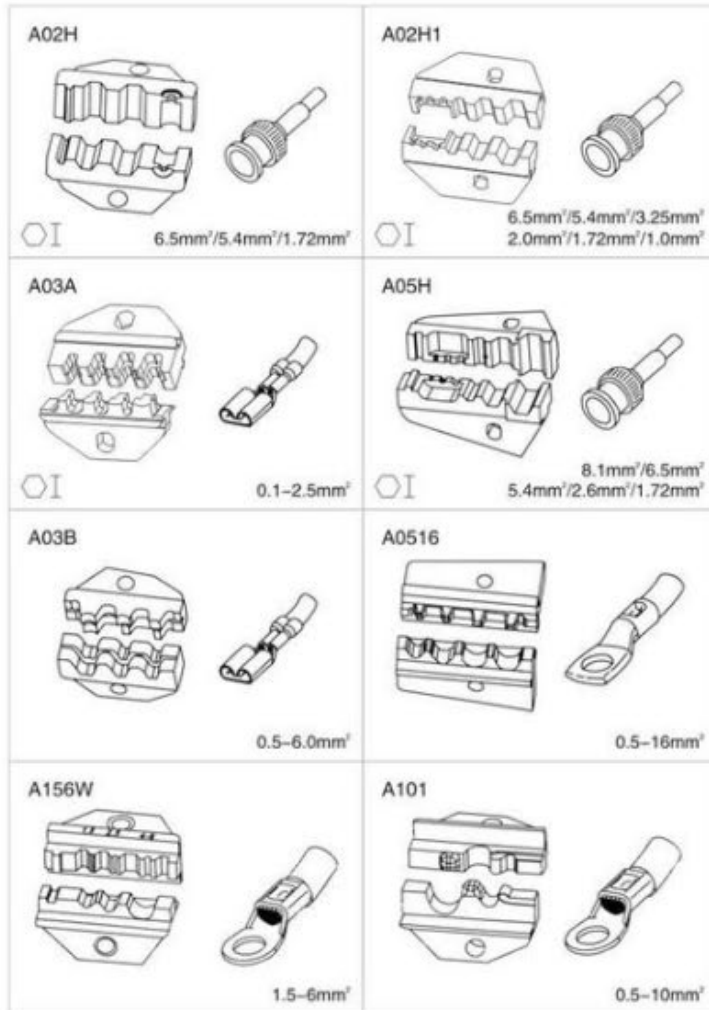
Description	AM-30
Output force	1.3TAir Pressure 0.5Mpa
Applicable air pressure	0.5-0.7Mpa
Max. operating pressure	1.0Mpa
Max. crimping capacity	Insulated terminal 16mm ²
External dimension	315mm × 130mm × 180mm
Weight	4.1kg

■ Confirm accessories before operation:





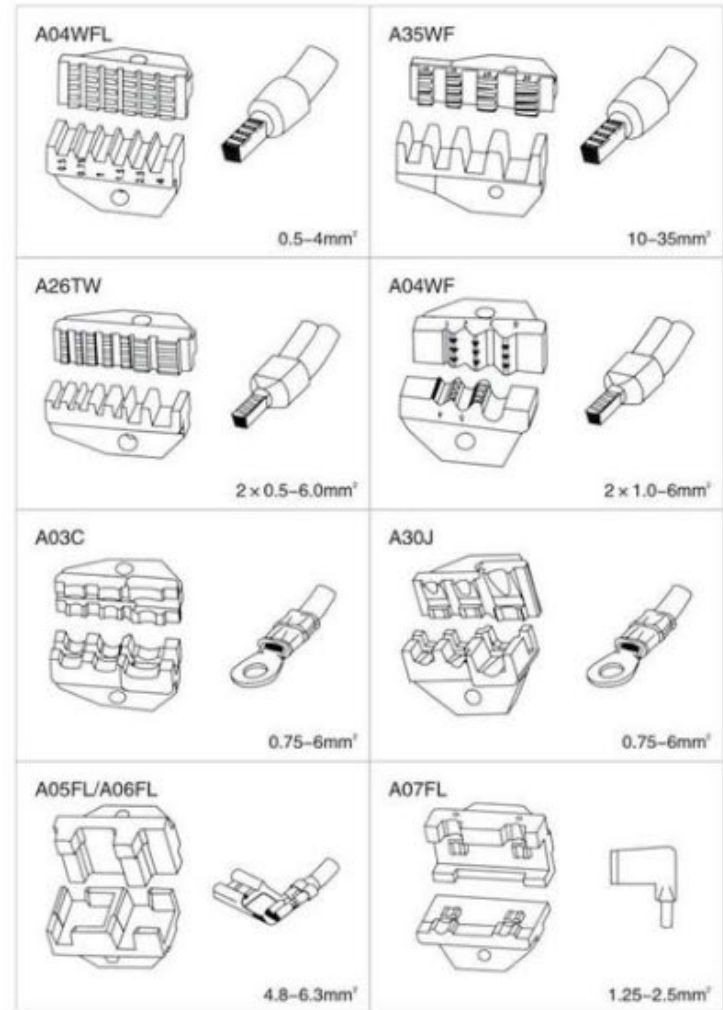
AM-30 Operation Instruction



The above mentioned specification is standard. Please ask the dealer for updated or special specification.

-5-

AM-30 Operation Instruction



The above mentioned specification is standard. Please ask the dealer for updated or special specification.

-6-