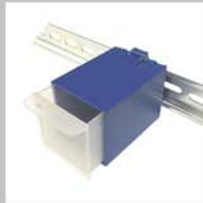




Electrical Components

2017 Innovations

- Panel Hardware
- Terminals and Connectors
- Control and Protection
- Wire Management
- Tools



Listed in this catalog you will find many of the new and exciting products and innovations launched by ITC in 2017. Please contact ITC for more details on these exciting products.

Subscribe to our newsletter to receive all the new exciting product updates - ask your salesperson or e-mail us!

Special offer for attentive readers!

Order any of the products in this catalog and mention 'Inno2017' and receive a \$20 instant discount!*

*This offer is valid until March 30, 2018, and can be applied once (1) per customer, and cannot be combined with other offers or rebates. The code 'Inno2017' and credit must be requested in writing with your order; total order (including at least one of the products in this catalog) must be a minimum of \$100 net, exclusive of shipping, handling and taxes.



(Left to right: Yogi, Anil, Abel, Murray, Matteo, Luca, Terry, Jone, Lily, Jaso, Ray. Absent: Irene, Glen)

Thank you for your continued business, loyalty and support!

The ITC Team

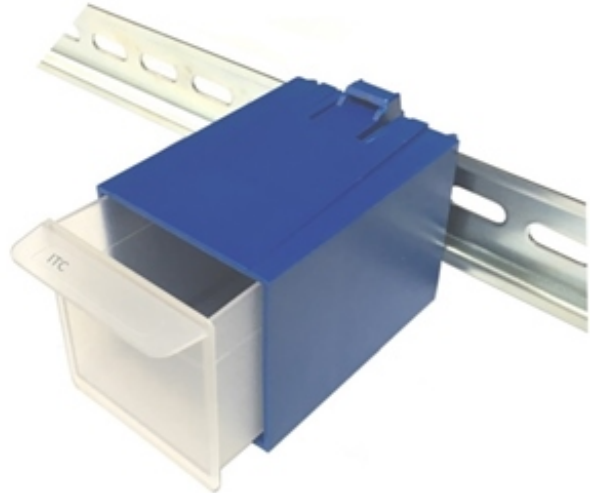
BEL-Air Enclosure Ventilation Fittings



The BEL-Air solves the problem of condensation in enclosures.

- Ratings: IP65, IK08 and NEMA 3R
- Approvals: cULus

DUMB Box (DIN Utility Mounted Box)



- A smart way to store screws, fuses etc.
- DIN Rail mounted

DINLET Plus - 20A AC receptacle



- Commercial grade NEMA5-20R 3-pin AC outlet
- Dimensions 70x40x57mm, DIN rail mounted
- Ratings: 120V, 20A
- Approvals: cULus

TEEPLUG® compact IP68 Plug-and-Socket Connectors



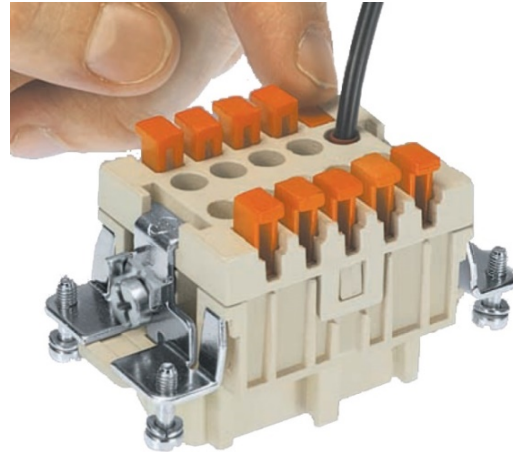
- Compact and easy installation
- Ratings: IP68 and NEMA 6
- Approvals: cULus

22.5mm Data Connectors



- Quick female-to-female connectors
- Mount in a standard 22.5mm \varnothing holes
- RJ45, USB2.0 and USB3.0 versions

Fast, Tool-free Wire Connection Multi-pole Inserts



- Reduced wiring time
- No need for tools
- Available in all standard sizes

DINLET-S Single 15A Outlet



- Commercial grade NEMA5-15R 3-pin AC outlet
- Dimensions: 70x30x48mm, DIN rail mounted
- Ratings: 120V, 15A
- Approvals: cURus

SIMPLEX Self-closing Multi-pole Housings



- Higher level of safety
- IP65 protection when locked
- IP44 when open

Rotary Changeover Switches (Reversing Switches)



- 1, 2, 3 poles
- Rated Current:
 - 25A (5.5 kW or 7.7HP)
 - 45A (11kW or 15 HP)
- Approvals: cULus, CSA

Definite Purpose Contactors



- 1, 2, 3 poles
- Rated Current: 20 to 90A
- Coil Voltages: 24 to 600V, 60Hz
- Approvals: cCSAus, cURus

IN65 Double Insulation Limit Switch



- Standard 30mm body
- 14+ Interchangeable actuators
- Ratings: IP 67, IK08
- Approvals: cCSAus

Safety Switch with Electromagnetic Release

- Guaranteed safety
 - Mechanical or Electrical interlock
 - PL e [ISO13849-1]
- Rated Current: 10 A
- 3x M20 cable entries
- Approvals: cULus



Cable Ties for Cold Weather



Designed for cold temperatures:

- min. operation temperature: -40° C / -40° F
- Lengths: 7-14"; Strength: 50-120 lbs.
- UL Type21S AH-2 supporting device certified

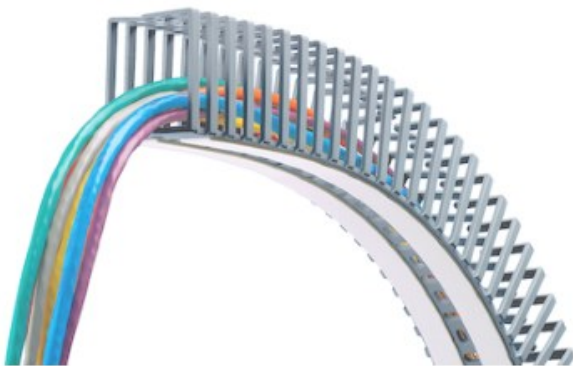


On-Load DC Disconnect Switches



- 4 Poles
- Rated Current (600 VDC): 20 to 30A
- Rated Current (480 VDC): 28 to 45A
- Rated Current (350 VDC): 40 to 63A
- Approvals: cCSAus

**CANALFLEX flexible wire duct
Expanded range**



- Now available in 5 sizes
- UL94V2 Polyamide
- Available with or without adhesive backing

**Bench mounted pneumatic
crimping tool**



- Supplied with foot switch and all tubing
- Die for insulated terminals included
- 20 dies available

JOKARI® ALLROUNDER - The Practical Stripping Tool for the Electrician



- Compact, safe and ergonomic
- Strips and dismantles round and flat cables
 - Round: 4-15mm (0.15-0.6") diameter
 - Flat: 15mm (0.6") max width
- Dimensions: 130x38x24mm

AMT mounting tables



- Safe, ergonomic assembly of control panels
- Caster base, swivel frame
- 3 models
- Accessories: Wire guides, spool holders...

AKKU-COMPACT Battery Operated Hydraulic Punches



- Ideal for small and medium panel shops
- 2 lightweight models

JOKARI® SYSTEM 4-70 Stripping Knife System



- Protection mechanism prevents cutting injuries
- Changing brackets allows for cables from 4 to 70mm
- Available in a complete kit or separately

Since 1994, ITC is a trusted resource for industrial electrical and automation components. With over 10000 different parts available from its warehouse in Toronto, ITC can provide its customers the perfect blend of dependable stock, quality products, fair pricing, and friendly, knowledgeable service.

Here are some of our manufacturing partners:



bimed

NOARK

TEKNIC



TEL: 416-663-7223
 FAX: 416-663-7224
 sales@itcproducts.com
 www.itcproducts.com



DIN Rail



DIN Rail Accessories



Non-Metallic Enclosures



Hinged Enclosures



Aluminum Enclosures



Suspension Systems



DIN Mounted Outlets



Terminal Blocks



Terminal Strips



Multipole Connectors



Compact IP68 Connectors



22.5mm Pushbuttons



LED Indicators



Control Stations



Midget and CC Fuse Holders



Limit Switches



Micro Limit Switches



Safety Switches



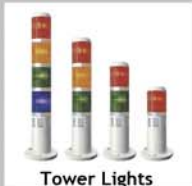
Power Supplies



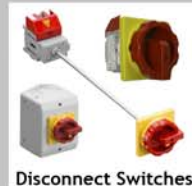
Foot Switches



IEC Contactors



Tower Lights



Disconnect Switches



Termination Kits



Crimp Terminals



Ferrules



Colour Coded Lugs



Cable Glands



Thread Adapters



Cable Ties



Wire Duct



DIN Rail Cutters



Crimping Tools



Hole Cutting & Punching Tools



Cutting & Stripping Tools - Wire & Cable