

Safety Limit Switches with Electromagnetic Release

FEP5 Series

A new line of safety-rated switches from COMEPI of Italy, with separate actuator and electromagnetic release is now available at ITC.

A safety switch with electromagnetic release is constituted by a mechanical switch, whose contacts are operated by the insertion of a (coded) key. The key is retained inside the switch by a solenoid (electro-magnet), making it impossible to remove it unless the solenoid is energized (or de-energized, depending on the model selected).

Safety Switches with electromagnetic release are generally used to provide operator safety by limiting access to enclosed locations where a danger situation may occur even after the contained equipment have been de-energized. For example, when mechanical parts are still in movement, or high temperature, high pressure fluids are present.

There are two standard modes of operation of these devices:

- The key can be removed [i.e.: the door can be opened] only when the solenoid is energized (also called "Mechanical lock")
- The key can be removed [i.e.: the door can be opened] only when the solenoid is de-energized (also called "Electrical lock")

THE FEP5 series are available in either standard mode of operation (see above), with 24, 120 or 230 V* AC/DC coils, with different arrangement of the contacts (total 4 NO or NC contacts), and with different position of the head[^].

* 230V AC/DC coil upon special request

[^] The head can only be rotated in increments of 90° at the Factory



Features and Specifications:

- Operating voltage: 250VAC
- Rated Thermal current: 10A
- Wire section: 22-16AWG
- Mechanical life: 1,000,000 operations
- Type of electrical protection: Class II
- Performance Level (ISO 13849-1): PL e
- Type of interlock (ISO 14119): 2
- Actuation force: 15N
- Extraction force: 30N
- Retention force: 1200N
- Dimensions (including head): 190 x 42 x 40mm
- Materials, body: reinforced polymeric thermoplastic
- Operating temperature: -25 to + 55 °C
- Cable entries: 3 x M20
- Ingress protection: IP 65
- Approvals: cULus (UL508 – A300 / Q300)



FEP Switches are equipped with 2 sets of contacts:

- One set of contacts is operated by the key
- The other set of contacts is operated by the solenoid

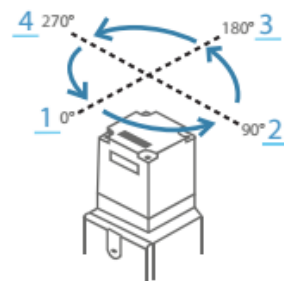
All switches have an emergency release device on the front of the body.

Safety Limit Switches with Electromagnetic Release (Order by Part No.)

Part Number	Contacts operated by key	Contacts operated by solenoid	Solenoid voltage
FEP5KP*FA1-024M	1 NO	2 NO + 1 NC	24V AC/DC
FEP5KP*FA1-120M	1 NO	2 NO + 1 NC	120V AC/DC
FEP5KP*FA2-024M	1 NC	2 NO + 1 NC	24V AC/DC
FEP5KP*FA2-120M	1 NC	2 NO + 1 NC	120V AC/DC
FEP5KP*FA3-024M	1 NO + 1 NC	2 NO	24V AC/DC
FEP5KP*FA3-120M	1 NO + 1 NC	2 NO	120V AC/DC
FEP5KP*FA1-024E	1 NO	2 NO + 1 NC	24V AC/DC
FEP5KP*FA1-120E	1 NO	2 NO + 1 NC	120V AC/DC
FEP5KP*FA2-024E	1 NC	2 NO + 1 NC	24V AC/DC
FEP5KP*FA2-120E	1 NC	2 NO + 1 NC	120V AC/DC
FEP5KP*FA3-024E	1 NO + 1 NC	2 NO	24V AC/DC
FEP5KP*FA3-120E	1 NO + 1 NC	2 NO	120V AC/DC
SP Key 25	90° key		
SP Key 26	Flat key		
SP Key 27	90° key w/rubber grommets		
SP Key 28	Flat key w/rubber grommets		
SP Key 29	Adjustable key		

Order by Part No. replacing ** with 1= head in standard position; 2= head turned 90° right; 3= head turned 180°; 4 head turned 270° right

Note: Operating keys must be ordered separately
Information subject to change without notification



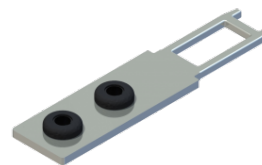
SP Key 25



SP Key 26



SP Key 27



SP Key 28



SK Key 29