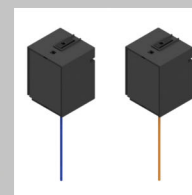
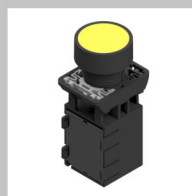
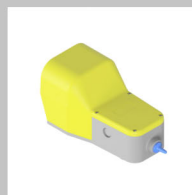


COMETPI



Wireless Batteryless Devices

- Pushbuttons
- Control Stations
- Limit switches
- Receiver



Wireless Batteryless Devices

ITC introduces the new line of COMEPI wireless batteryless control devices. These products allow remote operation and control of different control devices via a wireless connection - **no battery required**.

Control Unit Features and Specifications:

- Wide selection of Comepi products can be used
- Portable controls
- No cabling or power required (except for receiver)
- Easy design, installation, and programming
- **ENOCEAN** communication protocol - 902MHz operating frequency
- Range, with antenna:
 - 80M open field, un-obstructed
 - 30M open industrial environment
 - 20M obstructed industrial environment
- Reliability: long mechanical life, no damage to wiring
- Can use any COMEPI pushbutton EC series with add-on transmitter

Receiver Features and Specifications:

- Electromechanical relay; 4 channels / outputs; dry-contacts; each output = 1NO contact
- Diagnostic LEDs
- Up to 28 devices paired per channel
- 5 configurable operation modes per channel (momentary, maintained, reversed momentary, reversed maintained, bi-stable)
- Requires 24 VDC input
- Output: 24VDC or 24 - 230VAC
- DIN Rail mounted; IP20
- Approvals: cULus; FCC - 902 MHz spectrum

Application Examples

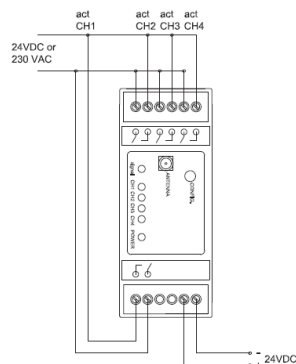
- Start command for automated machineries
- Opening of automatic doors
- Remote command for gates and entrance barriers
- Automated production lines
- Power and command for illumination devices
- Operator call button



WB-RRH9

Receivers and accessories:

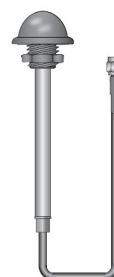
Wiring diagram



Receiver Antenna



WB-ANT90201
Orientable



WB-ANT90202
For panel

Add-On Transmitter



WB-RFH9

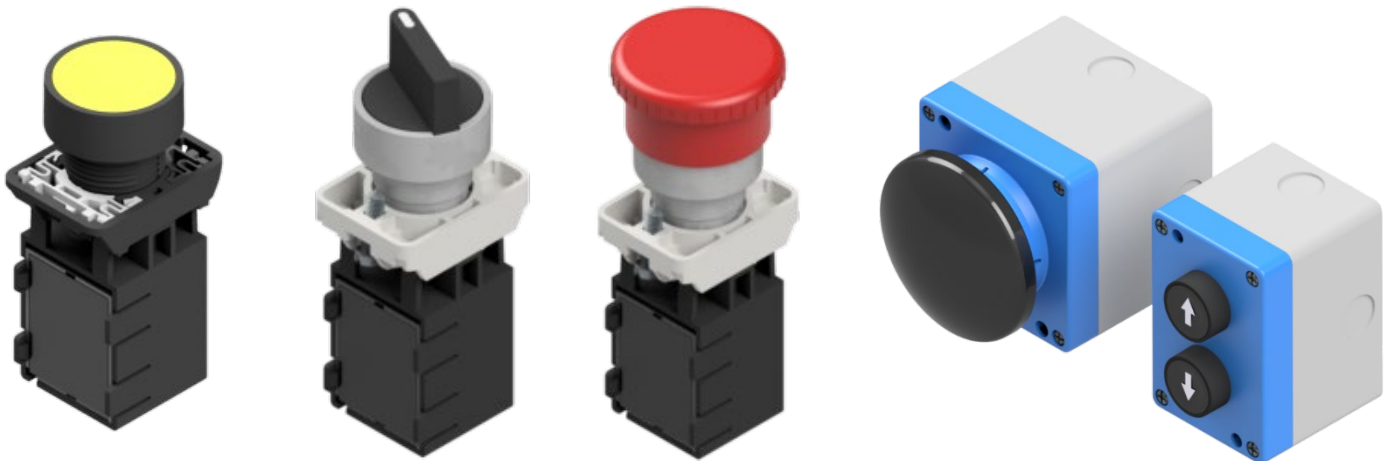
Pushbuttons & Control Stations

With the elimination of wires, control stations can be attached on any convenient surface, making life easier for designers and operators.

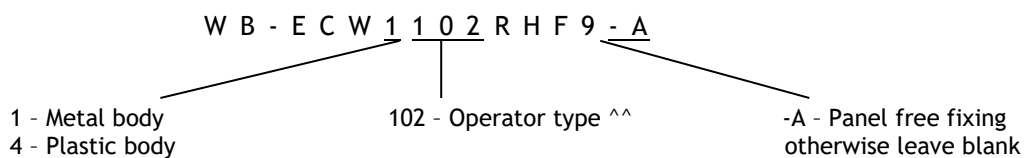
Control stations can be carried on forklifts to facilitate workers opening automatic doors, speeding up loading and unloading operations.

Available Pushbuttons & E-STOPS

- Spring return pushbuttons
- Spring return E-STOPS
- Spring return two position selectors
- Spring return 1 position joysticks
- Wobble pushbuttons

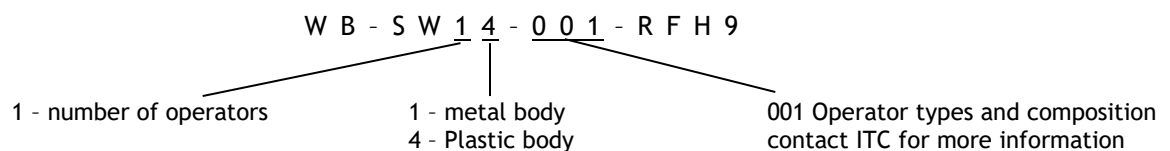


Naming Convention for Pushbuttons



^^ contact ITC for all available pushbuttons and control stations

Naming Convention for Control Stations

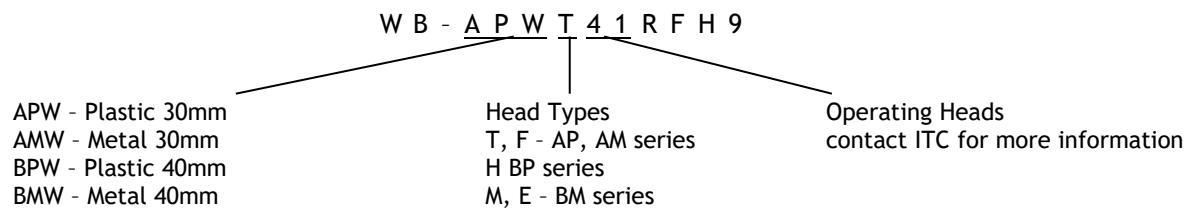


Limit Switches

COMEPI's 30mm and 40mm limit switches can now be configured as wireless-batteryless versions. The single contact is configured on the receiver.



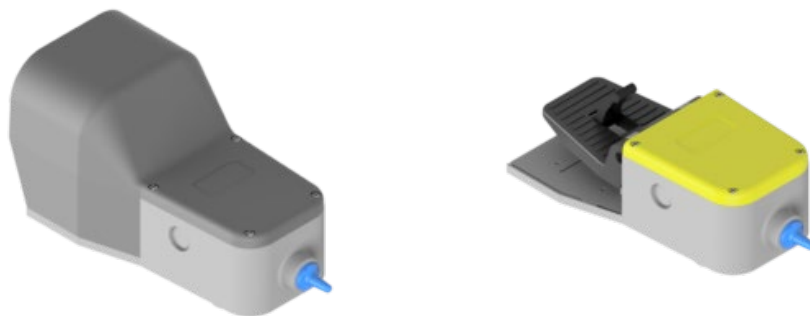
Naming Convention for Limit Switches



Contact ITC for all available limit switches and rope pull switches.

Foot Switches

The foot switch can be easily moved and placed in the most comfortable position for the operator. The lack of cable and wirings minimize the risks when moving within the working area.



Naming Convention for Limit Switches

