

Low Temperature Limit Switches

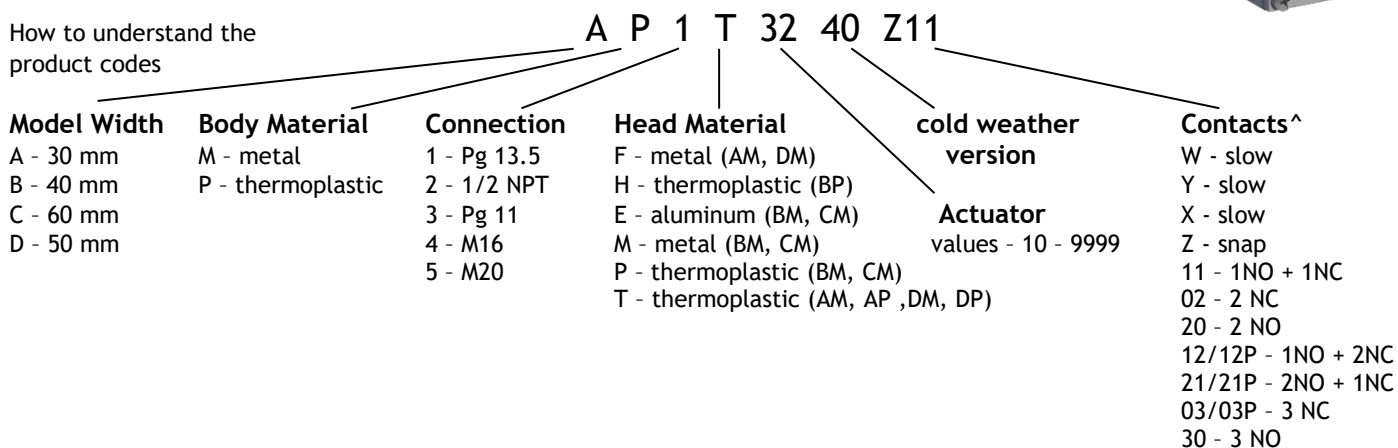
Low temperature Limit Switches are now available from ITC. Many of the standard Comepi series can be ordered in cold weather versions. With these limit switches the bottom of the operating temperature range is changed from -25°C to -40°C (-40°F).

The following series of limit switches are now available with a cold weather version:

- AM Series - 30mm metal limit switches
- AP Series - 30mm non-metallic limit switches
- BM Series - 40mm metal limit switches
- BP Series - 40mm non-metallic limit switches
- DM Series - 50mm metal limit switches
- DP Series - 50mm non-metallic limit switches
- CM Series - 60mm metal limit switches
- EMG Series - pre-wired metal limit switches

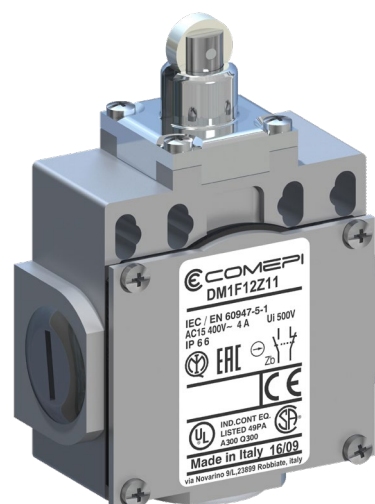
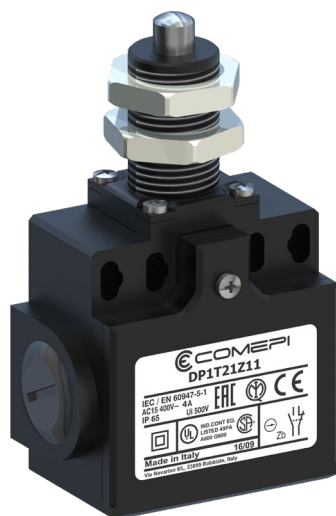
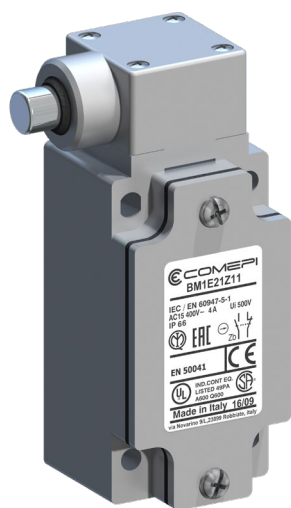
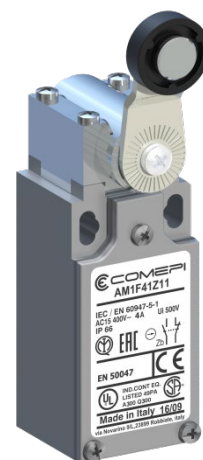
Naming convention for A/B/C/D Limit Switches

How to understand the product codes



[^] Contacts are designated by a letter and number combination, not all contact combinations are possible.

Not all combinations of the above are available. See ITC's catalog EC-1810 COMEPI IEC Limit Switches for more detail regarding Comepi limit switches



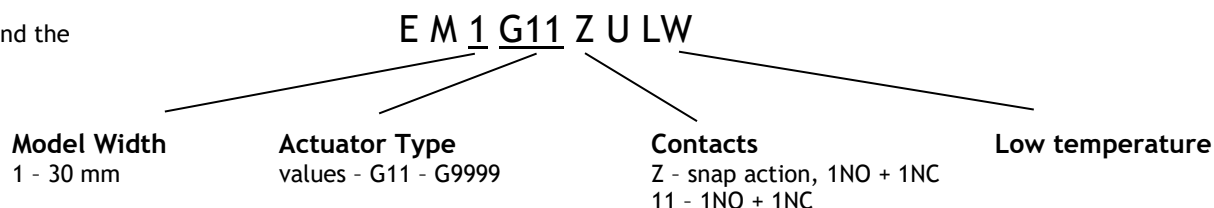
EMG Pre-wired metal limit switches - low temperature

Pre-wired with a 5-pole silicone cULus approved cable.
1 NO + 1NC snap action contacts.



Naming convention for EMG Limit Switches

How to understand the product codes



See ITC's catalog [EC-1810 COMEPI IEC Limit Switches](#) for more detail regarding Comepi limit switches.

ITC also offers various accessories for use with limit switches, such as M12 adapters, thread adapters, thread plugs and cable glands.